

## Capital Campaign exceeding original goal of \$10 million, Donors Sign Steel Beam



*Daniel J. Messina, PhD, FACHE, President and CEO of Richmond University Medical Center and Dr. Krishne Urs*

On October 27, a group of donors and dignitaries gathered at Richmond University Medical Center's Villa building parking lot. The mood was festive; the participants were celebrating the conclusion of a very successful capital campaign for Richmond University Medical Center's new emergency department.

Attendees were invited to sign a steel beam that will be incorporated into the new ED structure. Richmond University Medical Center's Board of Trustees Chair, Kate Rooney, and President and CEO Daniel J. Messina PhD, FACHE spoke about exceeding the original goal of \$10 million with the revised \$13 million project campaign goal. The largest major donor, Dr. Krishne Urs, spoke as well as Vincent Theurer, whose pledge put the campaign over its goal, as well as the many committed donors, including Marcello and Charlotte Sciarrino, a Board Member of the Foundation, and President of Island Auto Group.

# A Letter from the Foundation Board President



It is an understatement to say there is a lot going on at Richmond University Medical Center! In this RUMC REPORT you can see the new emergency department project continues to progress. A celebration where donors and Staten

Island leaders put their mark on a steel beam was held October 27. The beam will be placed in the building's structure that is being erected in November, bringing the project closer to its completion. The ambulance drop off area has been moved to its new location, and additional changes will take place before the new emergency department opens in Spring 2022.

In September, we had a successful Jack Sipp Golf and Tennis Tournament this

year, COVID-19 style. Social distancing and a gourmet to-go dinner were the new norm, but the event still raised over \$82,000. We also have received several nice donations from community groups in September, notably from Verrazano Kiwanis and the The Executive Club of Staten Island, Inc. We are very grateful for the support of our community.

This year we are unable to host our annual gala gathering of over 600 people in person, so we are pivoting to a virtual gala this year on November 19 at 7 pm. Information on sponsorship and buying a virtual ticket is included in this issue. A virtual family ticket will enable a household to a link to watch the gala on a computer, tablet, or phone, and includes an engraved brick that will be in the walkway outside of the emergency department. The ticket also

includes a chance at a raffle drawing for \$10,000. Buy your tickets or sponsor the event today!

As we end the year, donors may want to take advantage of a tax-wise gift of appreciated stock, and for those over 70½ years of age, funds can be rolled over from an IRA to a charity without income being counted for federal tax purposes.

We are thankful for the continued support of our RUMC family and the community as we continue to improve our campus.

Warm regards,

**Robert Urs**  
President,  
Richmond University Medical Center  
Foundation Board

## Richmond University Medical Center Foundation Board of Directors



Robert Urs, President



William Ferri



Pankaj R. Patel, MD



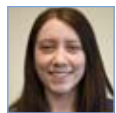
Joseph Torres, Vice President



Brian Gomez



Honorable Dianne Powers



Allison Cohen



Grandmaster Jhong Unk Kim



Richard S. Sansaricq



Richard Corash, Esq.



Robin Lefkowitz



John C. Santora



Robert Cutrona



Anthony Libecchi



Joseph Saporito, CPA



William D'Angelo



Sally Malfi



Marcello Sciarrino



Dom Famulari



Daniel J. Messina, PhD, FACHE



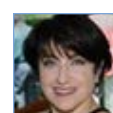
Welcome new  
Foundation  
Board member  
Vincent Theurer



Lina Fang



Mike Montalbano



Lucille Chazanoff, in memory



Joseph Ferrara



Philip Otterbeck, MD



## Verrazano Kiwanis Club Donates Funds for HEPA Filtration Machine

The Verrazano Kiwanis Club recently donated funds for the hospital to purchase a HEPA filtration system. These machines can turn a normal hospital room with a window into a negative pressure room, which prevents the transmission of infectious droplets spread by sneezing, coughing, and talking. These rooms are needed for COVID-19 and other patients who have droplet-spread diseases, such as influenza or tuberculosis.

## Richmond University Medical Center Receives \$5,000 Donation from Executive Club of Staten Island

As a show of appreciation for the hospital's response to the COVID-19 pandemic and for its continuing efforts to improve the quality of healthcare on Staten Island, the Executive Club of Staten Island, Inc., presented Richmond University Medical Center with a \$5,000 donation to assist with construction of the hospital's new state-of-the-art emergency department.

When completed in Spring 2022, the new emergency department will feature a new trauma center, private treatment rooms, results and waiting rooms, and comprehensive specialty areas for pediatrics and urgent care on the ground floor. The second floor will be used to upgrade the hospital's surgical suites and perioperative support space.

The Executive Club of Staten Island, Inc., focuses on fostering its members' business growth through relationship building, education, and community involvement.



# GRATITUDE GALA

*Join us from the comfort of your home as we give thanks to our frontline workers and community members who supported their neighborhood hospital during the COVID-19 Pandemic*

**THURSDAY, NOVEMBER 19, AT 7PM**

*For registration and any questions, please contact Gina Ferreri at [gferreri@rumcsi.org](mailto:gferreri@rumcsi.org) or 718.818.2106.*







## RUMC's Jack Sipp Golf and Tennis Outing Raises \$82,000

September 24 was a beautiful day for the Jack Sipp Golf and Tennis Tournament, and over 100 golfers and tennis players gathered at Richmond County Country Club to raise funds for Richmond University Medical Center.

Instead of the usual scramble format, tee times were assigned, and golf carts were outfitted with plastic dividers for the protection of the participants.

Unfortunately, COVID-19 rules prevented our normal evening gathering after the tournament, but guests received a delicious gourmet steak to-go dinner along with a bottle of wine donated by Foundation Board member Lina Fang and Mei Chi Liquor.

### The top three teams:

- Barry Beshkin and Guests (60)
- City Asphalt (61)
- Paul Meyers and Guests (63)





## YEAR-END GIVING

**APPRECIATED STOCK:** Many of our donors have given gifts of stock which can be very tax savvy if the stock is appreciated and has been held for more than a year.

To donate stock, pass the following information to your financial advisor or broker:

- DTC 8862 Broker account 80502140
- Richmond Medical Center Foundation, Inc.
- Salvatore Palmeri, Merrill Lynch 718-494-5554 (Salvatore.Palmeri@ml.com)

The Charitable IRA Rollover allows individuals age 70½ years of age and older to make direct transfers of up to \$100,000 per year (and up to \$200,000 per year for married couples) from individual retirement accounts to qualified charities without having to count the transfers as income for federal tax purposes.



## More Community Donations

**Thank you to our friends who have donated monetary gifts and services in support of our physicians, nurses, and staff on the front line:**

Alfredo Dinten  
Annamma Varghese  
Bamboo Hair Salon  
Centers Health Care  
Deacon Jim Cowan

Dr. Anne Marie Stilwell  
Dr. Craig Campbell  
John and Lisa Laub  
Joseph Sciacca  
Mrs. Fran Busch

Mrs. Linda Penett  
Mrs. Mary Blaich  
Mrs. Paulette Hughes  
Ms. Joann Gilmartin  
Staten Island Care Center

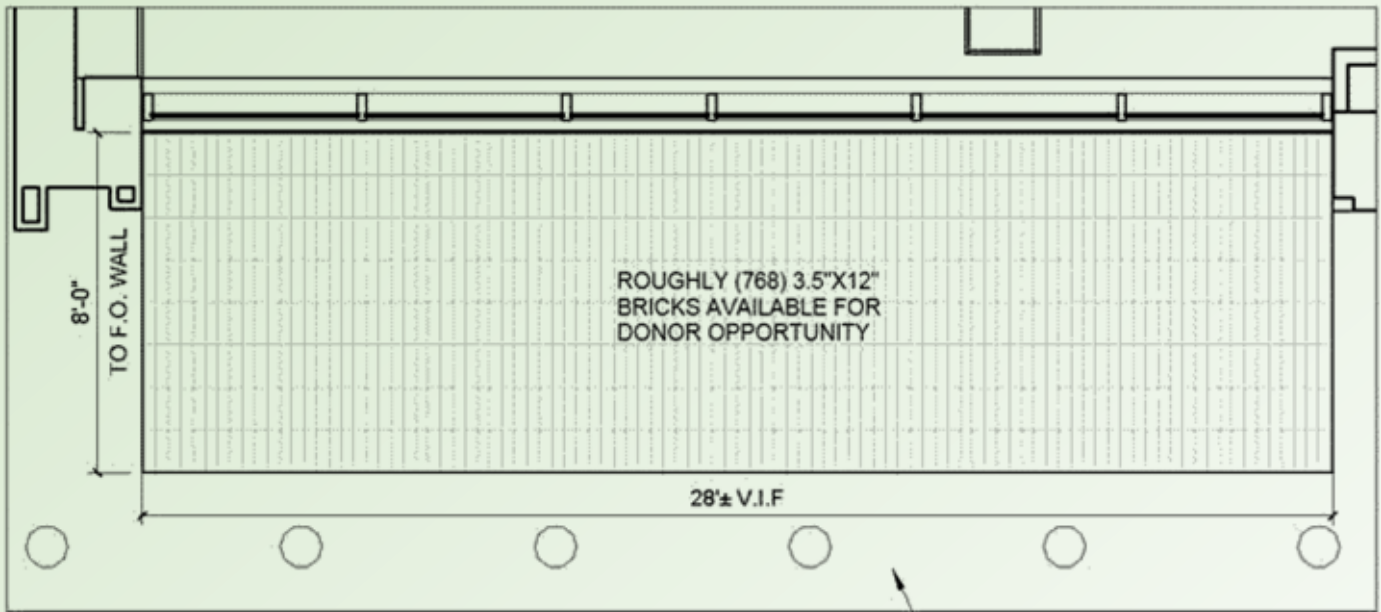
Staten Island Children's Museum  
Richmond County Savings  
Foundation

Note: During the pandemic, we received many generous donations. Some of them were not reported to the Development Office and went directly to departments and floors. If you made a donation and we have not acknowledged it, please contact Gina Ferreri, 718-818-2106 or [gferreri@rumcsi.org](mailto:gferreri@rumcsi.org). We want to properly thank you for your generosity!

## Donor Bricks

The Richmond University Medical Center Foundation is pleased to announce its Brick Fund™ raising campaign! This is a unique opportunity to show support for our new emergency department by purchasing a personalized, engraved brick that

will be placed outside the entrance. Not only will donors be able to help in “Paving the Way to the Future of Staten Island Healthcare,” but also they can leave a permanent family or company legacy in the community.



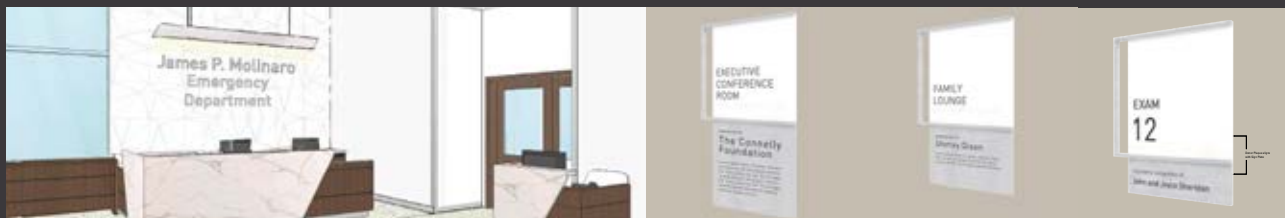
Walkway outside main emergency department entrance.

## Donor Recognition

Level 1	\$1,000,000+	Pin Mounted Naming Letters and Large Plaque
Level 2	\$100,000–\$999,000	Large Plaque
Level 3	\$50,000–\$99,000	Medium Plaque
Level 4	\$10,000–\$49,000	Small Plaque



Donor Recognition Level 1: 6" letters



Level 1

Level 2: 6" x 6"

Level 2: 6" x 4"

Level 2: 6" x 2"

Pledges can be made for up to a five-year period. Cash, credit card, appreciated stock, and/or payroll deduction (for RUMC employees) can be used to make pledges. Please contact Laura Gajda, Vice President of Development, at 718-818-2103 or at [LGajda@rumcsi.org](mailto:LGajda@rumcsi.org) for information on naming opportunities.



Salute the past, embrace the present,  
and make your mark on the future with  
our commemorative brick campaign!

To purchase a brick, fill out and return this form or visit [www.rumcsi.org/vital](http://www.rumcsi.org/vital).  
The commemorative bricks are \$500.00 / brick (3 1/2" x 12").

**Options for your engraved, custom brick include:**

- your family name
- your children's names
- your company or organization's name
- commemoration of a special occasion
- a memorial for a loved one
- an inspirational message

Name: \_\_\_\_\_

Address: \_\_\_\_\_

City, State, Zip: \_\_\_\_\_

Phone: \_\_\_\_\_ Email: \_\_\_\_\_

Each brick may contain up to 20 characters per line (3 1/2 x 12 up to 3 lines of text). All text is centered and capitalized.

**Brick Inscription**

Line One: \_\_\_\_\_

Line Two: \_\_\_\_\_

Line Three: \_\_\_\_\_

**Please return your order form and check payable to:  
Richmond University Medical Center Foundation, 355 Bard Ave., 6th Floor,  
Staten Island, NY 10310.**

**If you have any questions, please call 718.818.2106.**

**The Richmond University Medical Center Foundation is a recognized  
501(c)3 organization, Tax ID # 27-1059815. Your brick purchase is a  
charitable donation and is tax deductible.**



# Message from the President & CEO, Daniel J. Messina, PhD, FACHE



Dear Community Members,

During this year of great uncertainty we at Richmond University Medical Center (RUMC) have been comforted, encouraged, and humbled by the outpouring of generosity and support from our community.

Remarkable people, organizations, community groups, small businesses, and corporations have all stepped up to support our first responders, front-line health care workers, and patients with donations of meals, snacks, personal protective equipment, hand-sewn masks, monetary gifts, and more. We thank them all!

As you can see in this newsletter, our new emergency department is well on its way to completion. We appreciate all the donors who made this project a reality. If you would still like to contribute, please see the form in this newsletter to sponsor an engraved brick in the walkway that will be outside the emergency department entrance.

You can also buy a ticket to our virtual gala, which includes a brick and a ticket to the \$10,000 raffle that will be held during the virtual gala on November 19.

Our hospital is on an exciting infrastructure renovation path to position the hospital for the future. The new emergency department is only the first step. Soon to follow are new surgical suites, a co-generational plant and upgrades of our maternal child areas.

As 2020 draws to a close, we know some of you make decisions about your year-end philanthropy. RUMC is your community hospital, and if you would like to join us in improving healthcare, for all of Staten Island and the surrounding communities, please consider a year end gift.

With thanks,

Daniel J. Messina, PhD, FACHE  
President & Chief Executive Officer  
Richmond University Medical Center

## I'd like to make a gift to Richmond University Medical Center

Name: \_\_\_\_\_ Company/Organization: \_\_\_\_\_

Address: \_\_\_\_\_

City/State/Zip: \_\_\_\_\_

Phone: \_\_\_\_\_ Email: \_\_\_\_\_

Address: \_\_\_\_\_

### I want my gift to support:

New Surgical Suites       Maternal Child Unit Improvements       COVID 19 Fund

**Amount:**  \$50       \$100       \$250       \$500       \$1,000

Please contact me about naming opportunities in the new ED or Maternal Child area

My check in the amount of \$\_\_\_\_\_ is enclosed.

Please make check payable to the Richmond University Medical Center

Please charge my credit card: Credit Card (check one)

Amex       MasterCard       Visa       Discover

Credit Card#: \_\_\_\_\_ Exp. Date: \_\_\_\_\_

Name on Credit Card: \_\_\_\_\_

Signature: \_\_\_\_\_