

Richmond University Medical Center



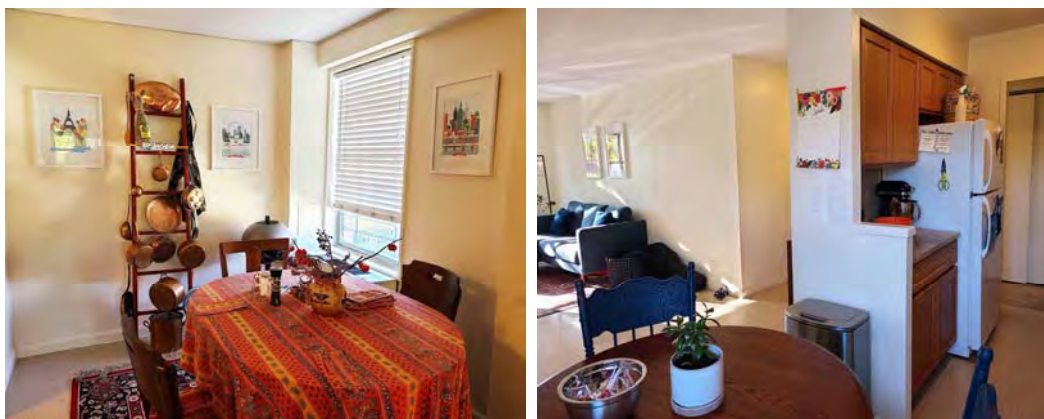
RESIDENT QUARTERS 2022-2023



The RUMC Resident Quarters offers a welcoming respite for RUMC medical residents and consists of 96 studio, one and two bedroom units.



Conveniently located on the RUMC campus, the Resident Quarters is just a short walk from the Sister Loretto Bernard Pavilion.



Light-filled, open floor plan studios and one and two bedroom units all have full kitchen and baths and ample storage space.

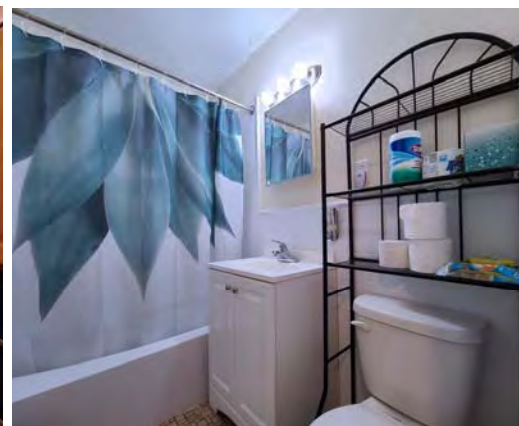
Heat, air-conditioning, hot water, gas and electricity are included in the fees and the Resident Quarters offers laundry facilities, post boxes and campus security.



The one and two bedroom apartments feature spacious kitchens, dining areas, living and bedrooms.



Studios are available in three configurations with kitchens equipped with all essential appliances.

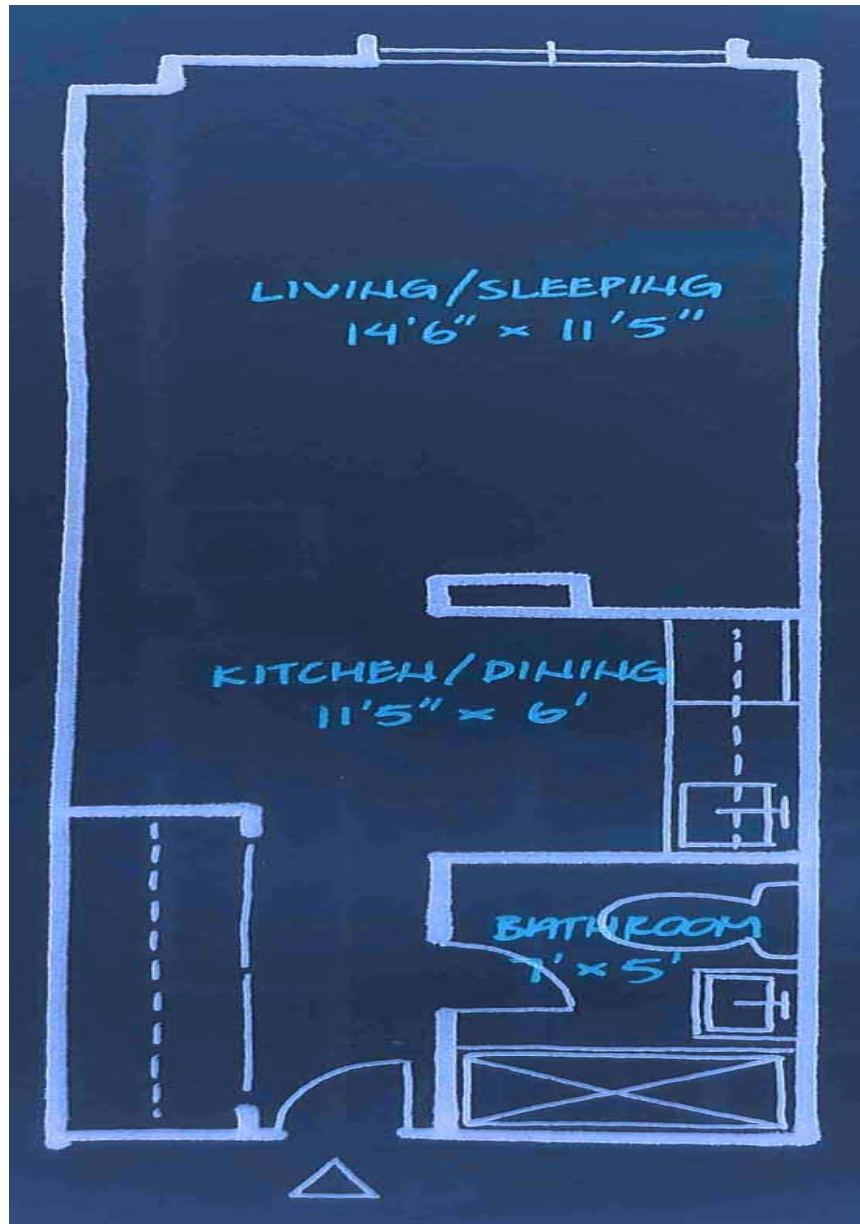


Floor Plans

Studio A

313 sq ft

\$1000.00 monthly fee

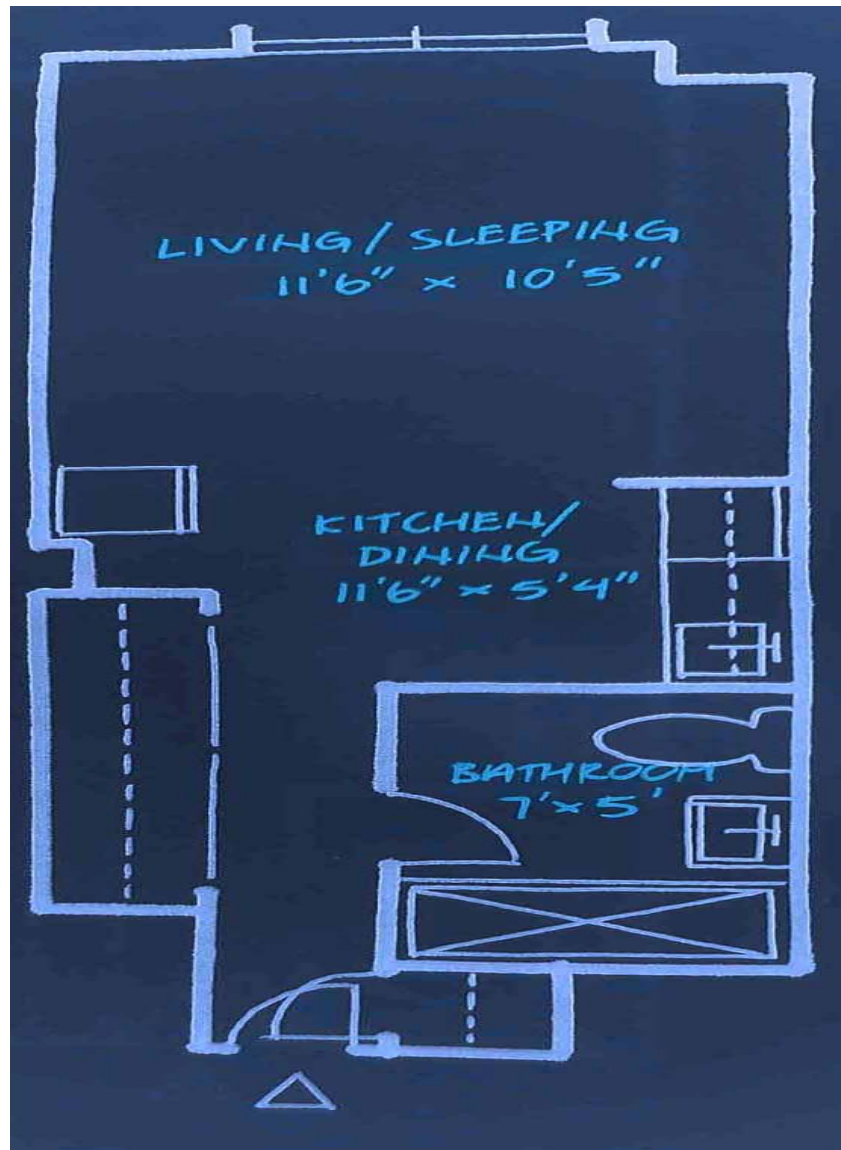


Floor Plans

Studio B

269 sq ft

\$1000.00 monthly fee

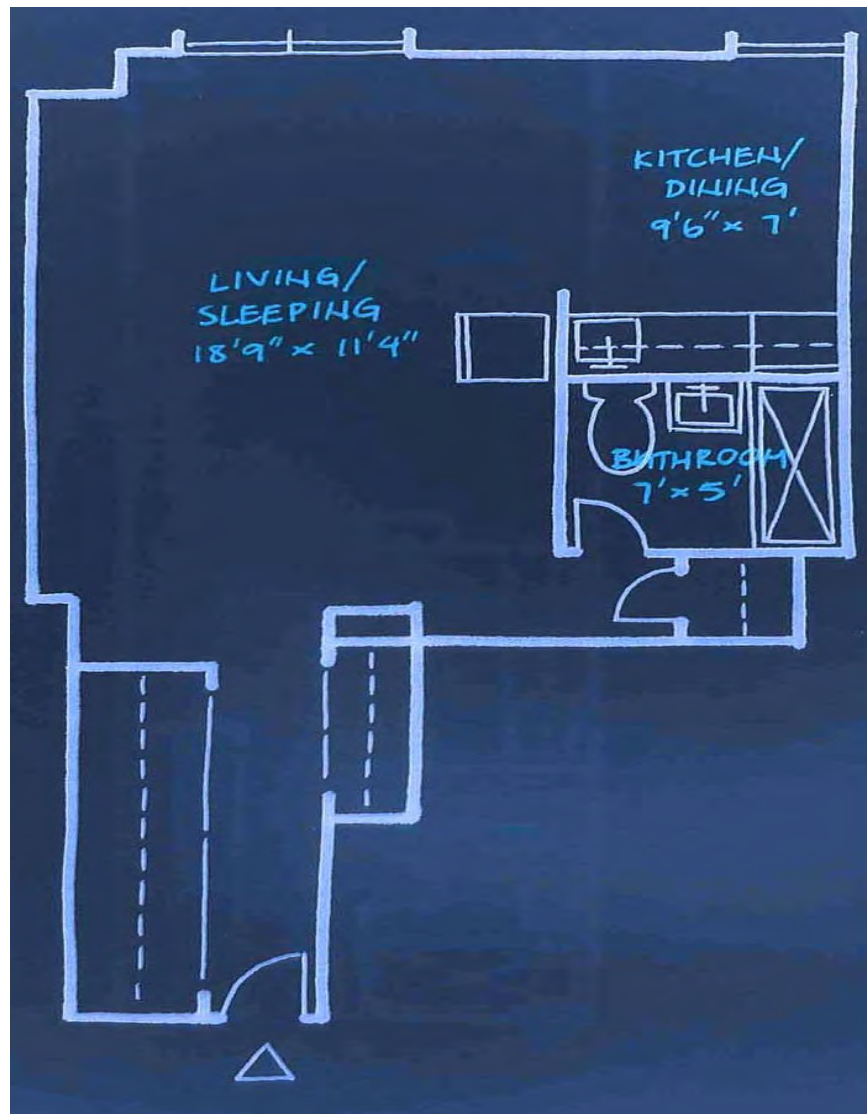


Floor Plans

Alcove Studio C

391 sq ft

\$1050.00 monthly fee

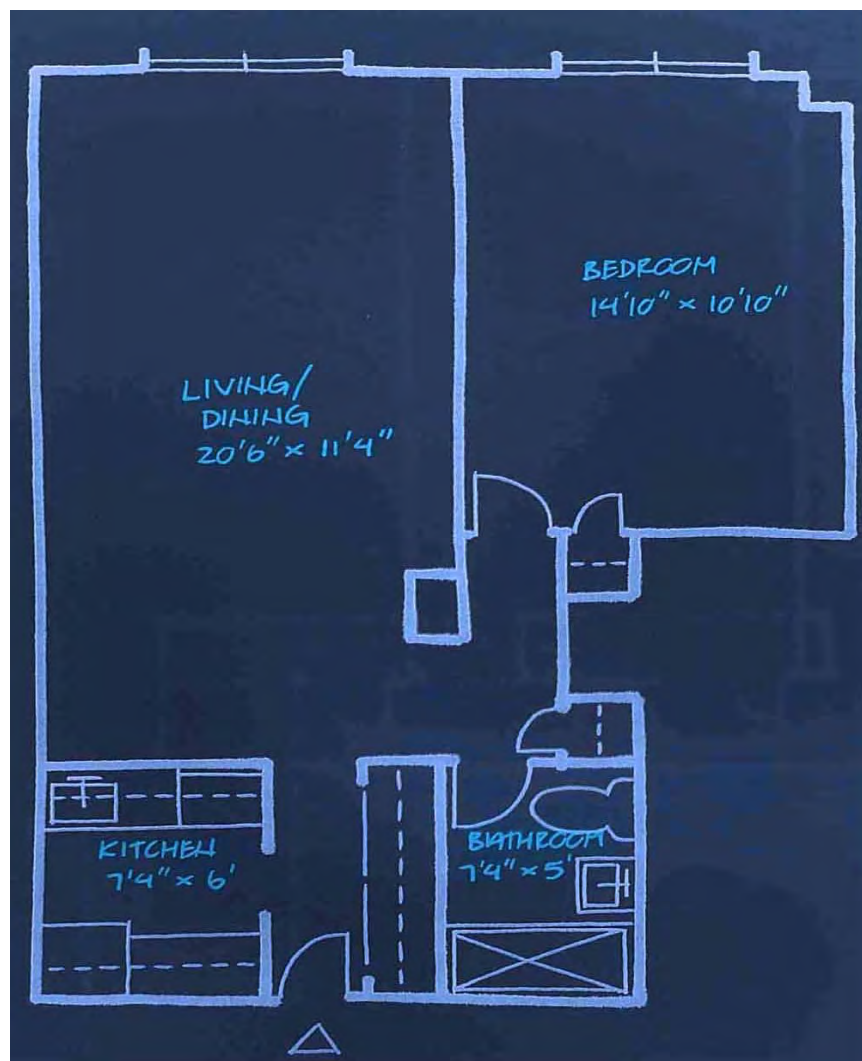


Floor Plans

One-Bedroom A

544 sq ft

\$1373.00 monthly fee

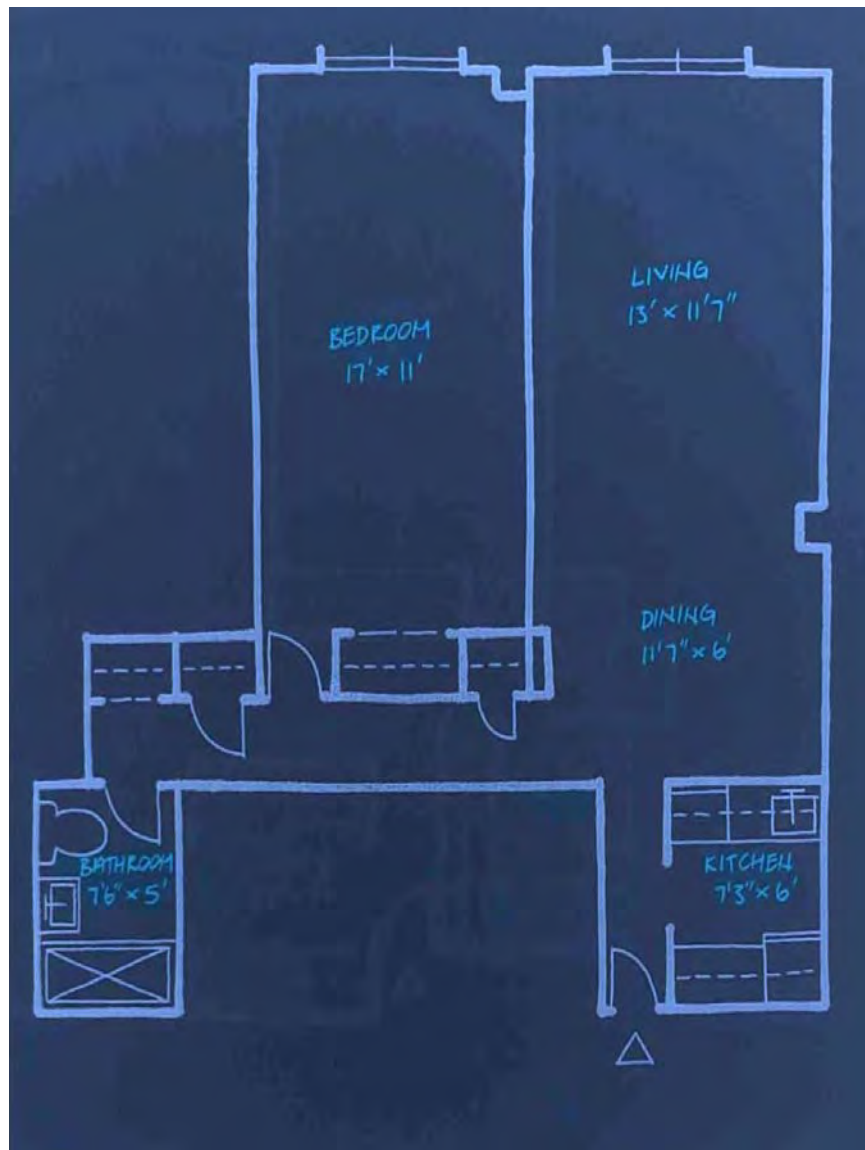


Floor Plans

One-Bedroom B

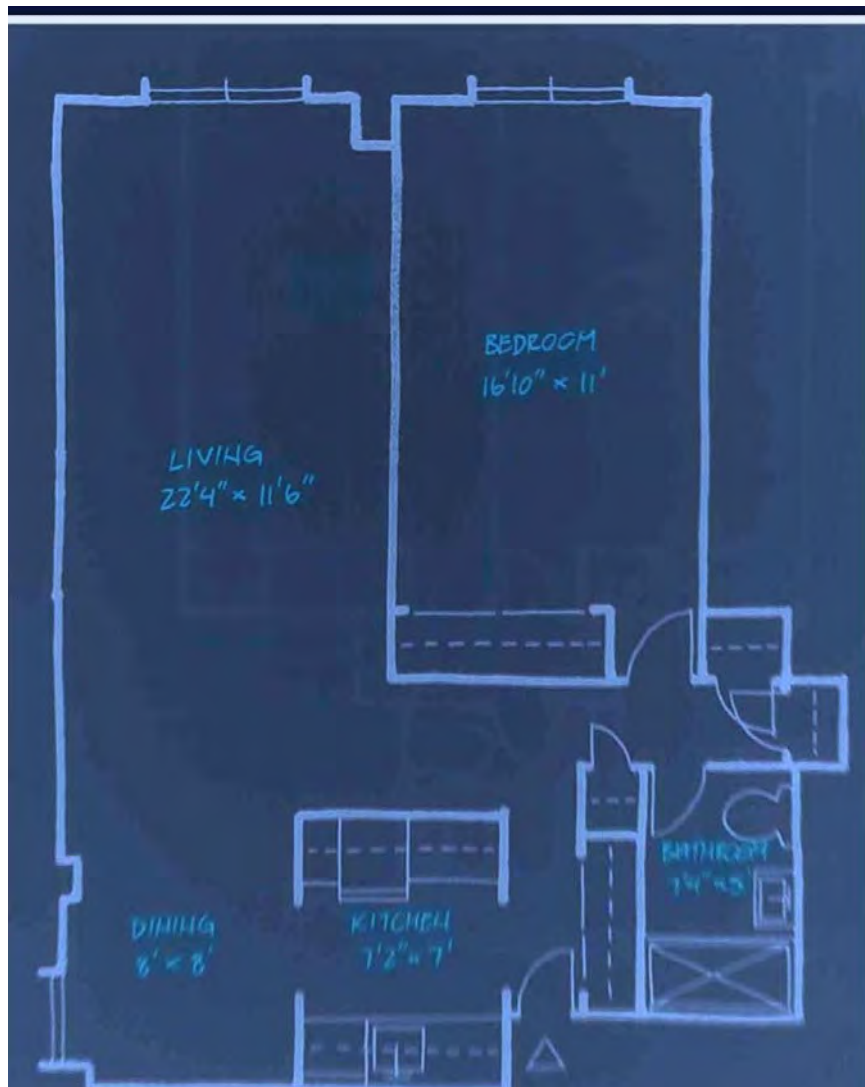
663 sq ft

\$1373.00 monthly fee



Floor Plans

One Bedroom C:
663 sq ft
\$1499.00 monthly fee

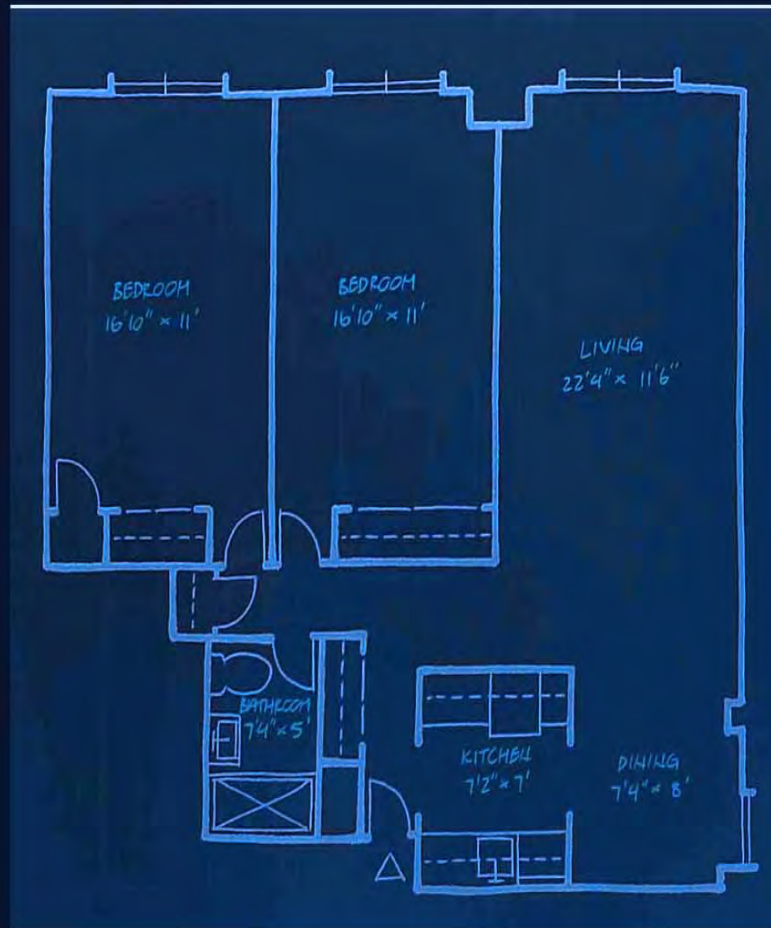


Floor Plans

Two Bedroom

831 sq ft

\$1873.00 monthly fee



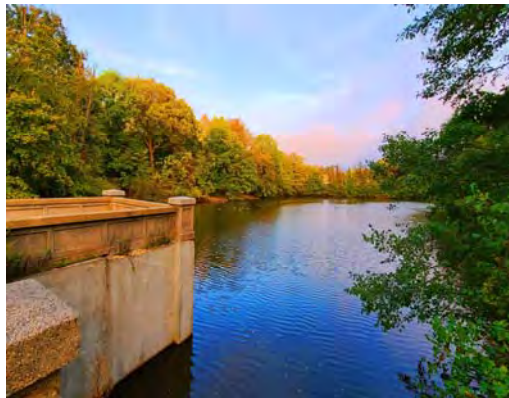
The RUMC Campus is surrounded by rich parklands, giving way to New York Harbor.



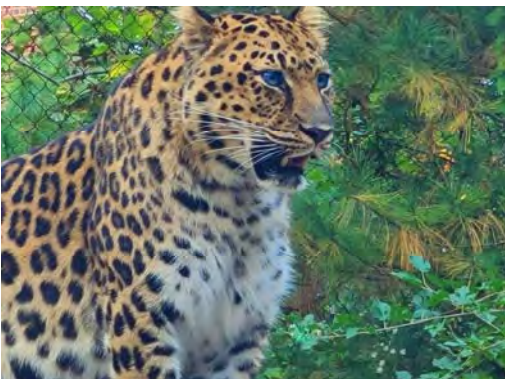
Around the Campus

The periphery of the Campus is populated by multicultural and diverse eateries, alfresco cafes, shops, schools, houses of worship and markets.

Staten Island is the greenest of all five boroughs of New York City and just blocks away from the RUMC Campus is Silver Lake Park which features an idyllic reservoir, an 18-hole golf course, lakeside running paths, tennis courts, basketball courts, baseball diamonds and playgrounds.



Nearby, Clove Lakes Park has tree-covered running, hiking and cycling trails, boat rentals, fishing piers, picnic/barbeque areas, soccer and baseball fields, basketball courts, and an outdoor ice skating rink.



Opposite Clove Lakes Park, the [Staten Island Zoo](#) features animals from across the continents: Latin American spider monkeys, red kangaroos and emus from Australia, Mexican roadrunners, and Amur leopards from the borderlands between Russia and China.

Along the northern waterfront **Snug Harbor Cultural Center & Botanical Garden** features a cluster of Neoclassical Greek structures set in a sweeping 80-acre forested park that is open, from dawn to dusk, every day of the year.



This Smithsonian affiliate hosts an archipelago of arts outposts, including the Staten Island Museum, the Staten Island Children's Museum, Chinese Scholar Garden, the Newhouse Center for Contemporary Art, an Art Lab, a Music Hall and the Staten Island Conservatory of Music.

Snug Harbor, just blocks away from the Richmond University Medical Center, also offers tree-lined running trails, botanical gardens, picnic pavilions, farmers market, and numerous New York City landmarks.

The nearby **North Shore Waterfront Esplanade Park** offers a beautiful esplanade opposite Manhattan's crystalline skyline for sojourners, cyclists, photographers and runners.





The Staten Island September 11th Memorial

For more immersive encounters with the natural world, Staten Island's Greenbelt provides a vast reserve of protected forests, parks, lakes and wetlands. **The Greenbelt** is a sanctuary for once-endangered white-tailed deer, along with ring-necked pheasants, wild turkeys, cottontail rabbits, black-masked raccoons, and red-eared slider turtles. The reserve is crisscrossed with hiking trails, some of which date back thousands of years, initially created by the indigenous Lenape peoples who discovered and populated the island.

Along the edge of this eco-haven is another type of sanctuary: **The Jacques Marchais Museum of Tibetan Art**.

Lauded by the Dalai Lama during a visit to the site, this beacon of Buddhist culture is positioned on Lighthouse Hill and is surrounded by Shangri-La-like gardens for meditation and highlights Tibetan scroll paintings, sacred sculptures, and musical instruments.

Historic Richmond Town hosts thousands of artifacts as well as well as historical structures. It is a time capsules dating back to the 1600s showcasing one of the country's oldest structures.

The island's **South and Midland Beaches** feature a seaside boardwalk that extends for almost two miles, fishing piers, lifeguard-protected beaches and open-air cafes, and hosts a series of summertime music festivals.



New York City

The Staten Island Ferry embarks from the Saint George Terminal, the terminus of MTA buses and the Staten Island Railway, and sails to the White Hall/South Ferry Terminal on the southern tip of Manhattan every half hour (with more frequent ferries during rush hours). During the 25-minute harbor crossing, the ferry glides past the **Statue of Liberty** and **Ellis Island**.



Saint George Terminal



White Hall/ South Ferry Terminal

New York is a city of culture, music, art, history, food, fashion and architecture.

Just off Fifth Avenue, on West 53rd Street, the **Museum of Modern Art** presents an explosion of modern and contemporary art.

And just north of the museum, **Lincoln Center** hosts a brilliant constellation of music ensembles, ranging from the New York City Ballet and the Juilliard School of Music, to the Chamber Music Society of Lincoln Center, the Metropolitan Opera and the New York Philharmonic, complemented by the Film Society of Lincoln Center, which stages the annual New York Film Festival.

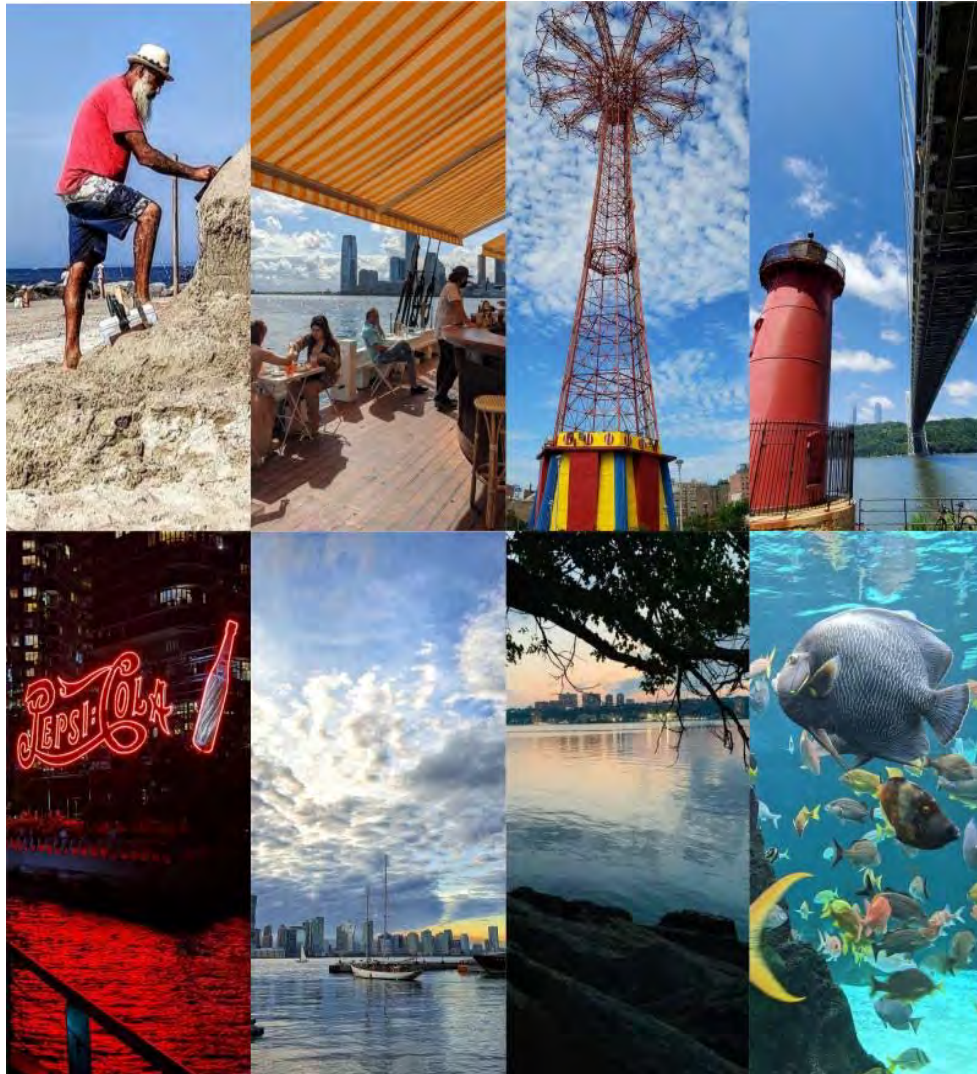


On the Upper West Side, in the heart of New York's **Museum Mile** sits **The Metropolitan Museum of Art** which casts a global spotlight on five thousand years of art gathered from civilizations across the continents, from the sculpted pharaohs of ancient Egypt to the carved deities of classical Greece.

Nearby, also along Central Park West, **The American Museum of Natural History**, renowned for its exhibitions and scientific collections, is a field guide to the planet and its diverse cultures.

The Museum's **Hayden Planetarium**, one of this world's most advanced cosmic cinema, projects hyperreal 3D films of celestial phenomenon – from the evolution of the Milky Way to the discovery of the potentially habitable solar system TRAPPIST-1, creating a fantastical simulation of the universe.

And **The Rose Center for Earth and Space** explores the history of our universe and the nature of the galaxies, planets and stars.



New York City Guide

Staten Island and its environs offer so much to explore and enjoy and RUMC encourages its Residents and Fellows to refresh and reenergize by experiencing our community with its vast parklands and unlimited cultural vibrancy.



RESIDENT'S WELLNESS PARTY



For more information contact:

**Michael Nanry
Campus Housing Coordinator
Office of Graduate Medical Education
718-887-1354
mnanry@rumcsi.org**

Richmond University
 **Medical Center**