

2017 CANCER ANNUAL REPORT



SMOKING CESSATION
ROBOTIC SURGERY
GYNECOLOGICAL ONCOLOGY
AMBULATORY ONCOLOGY UNIT
BEHAVIORAL HEALTH SERVICES
RADIATION THERAPY
PEDIATRIC ONCOLOGY
PALLIATIVE CARE

EBUS
LUNG SCREENING
ONCOLOGY NURSES
BOARD CERTIFIED ONC MD
REHABILITATION SERVICES
PATIENT NAVIGATORS
END OF LIFE CARE

OUR CANCER PROGRAM GENETIC MAKEUP

Richmond University
 **Medical Center**
An Affiliate of the Mount Sinai Health Network



MESSAGE FROM THE PRESIDENT & CHIEF EXECUTIVE OFFICER

In October 2017 it was discovered that Staten Island, which accounts for just 5.5 percent of the city's population, accounts for 7.16 percent of New York City's cancer cases. The rate of cancer for Staten Island women is 18.53 percent higher than the rate for the city as a whole.

Lung cancer is the second most common cancer and the leading cause of cancer death among both men and women. As we know most lung cancers are related to smoking and these diagnoses can be prevented.

We are fortunate here at Richmond University Medical Center because we get the opportunity to be on the front lines saving the lives of smokers and former smokers, detecting and treating lung cancer while it is still asymptomatic. In that regard we are having a banner year with our Smoking Cessation Classes and our Lung Screening Program.

These efforts would not be possible without the work of our oncologists, nurses, technicians, and our Lung Nurse Navigator. Our professionals demonstrate unprecedented levels of compassion and dedication in caring for their patients and helping their patients' families as they work toward healing, recovery, and remission.

Daniel J. Messina, PhD, FACHE, LNHA
President & Chief Executive Officer



MESSAGE FROM THE DIRECTOR OF ONCOLOGY

Richmond University Medical Center continues to provide an integrated cancer care program. All departments identify the role they play in advancing oncology work at the hospital as we strive to combat cancer and give our patients the best oncological care possible.

This year, our Community Outreach Team has been at the forefront of prevention, distributing information about our cancer services at dozens of Staten Island local events. Our new EBUS allows us to use state-of-the-art satellite technology to pinpoint difficult to biopsy lesions.

The palliative care program now provides our patients with aggressive support in the final phases of their diseases. We plan to introduce earlier interventions for the patient at the onset of disease.

Our ambulatory services have expanded to another room to give more privacy to the patient receiving chemotherapy. Individual education initiatives help patients understand their disease and treatment in a supportive manner with our nurses available to help at any phase of their treatment.

We welcome you to the Richmond University Medical Center.

Thomas J. Forlenza, MD
Director of Oncology



CLINICAL AND DIAGNOSTIC SERVICES

Angiography
Bronchoscopy
Computerized Axial Tomography Scan (CT)
Digital Radiography for Mammography
EBUS
Echocardiography
Magnetic Resonance Imaging (MRI)
Magnetic Resonance (MR)

Radiation Therapy Services

3D Conformal Radiation Therapy
Brachytherapy - High Dose Rate (HDR)
Brachytherapy - Low Dose Rate (LDR)
Computerized Treatment Planning
Electron Beam
External Beam Radiation Therapy
HDR Radiation Therapy System
Image-Guided Radiation Therapy (IGRT)
Intensity Modulated Radiation Therapy (IMRT)
Linear Accelerator
Proton Beam
Radiosurgery to treat brain tumors
Systemic Radioisotopes

Mammography
Mediastinoscopy
Nuclear Medicine
Positron Emission Tomography Scan (PET)
Robotics
Stereotactic Guided Biopsy
Ultrasound

Systemic Therapy Services

Chemoembolization
Hormone Therapy
Infusion Center with Chemotherapy
Plasmapheresis

Other Services

Speciality Navigators - Breast and Lung
Ambulatory Oncology Unit & Infusion
Center for both Adult and Pediatric
Satellite Chemotherapy Pharmacy
Clinical Trials
Behavioral Health Services



LETTER FROM THE CANCER LIAISON PHYSICIAN

This has been a very rewarding year for those of us who are part of the Richmond University Medical Center Cancer Committee. Our team draws from many different disciplines including board certified specialists, oncology nurses and technicians, cancer patient navigators, social workers, and pastoral care providers among many others. I would like to thank these caring and committed professionals who bring together their expertise and experience in order to provide the very best cancer care for our patients.

2017 flew by as we adapted to our new RQRS data reporting system. Gains have been made as we are now able to track patients in real time as they progress through their cancer treatment modalities. Our Survivorship Program has developed with the ambitious goal of providing survivorship care plans to all our curative intent cancer patients. Multidisciplinary groups worked hard in 2017 with tangible gains such as improving patient education and comfort in the chemotherapy delivery suite. In addition, through community outreach, we have run several successful lung and colon cancer screening programs as well as championed robust educational lectures for patients and staff at RUMC.

Through several quality studies, we have improved our screening services for colorectal cancer in order to ensure that we are adhering to evidence based guidelines. This helps set the stage for next year as we strive to meet the national “80% by 2018” goal for colorectal cancer screening. This “80% by 2018” goal is a national initiative in which more than 1,500 organizations—including medical professional societies, academic centers, survivor groups, government agencies, cancer coalitions, and cancer centers have pledged to screen 80% of their adult population for colorectal cancer by 2018. RUMC is among one of the organizations that signed this pledge and we look forward to meeting this challenge next year.

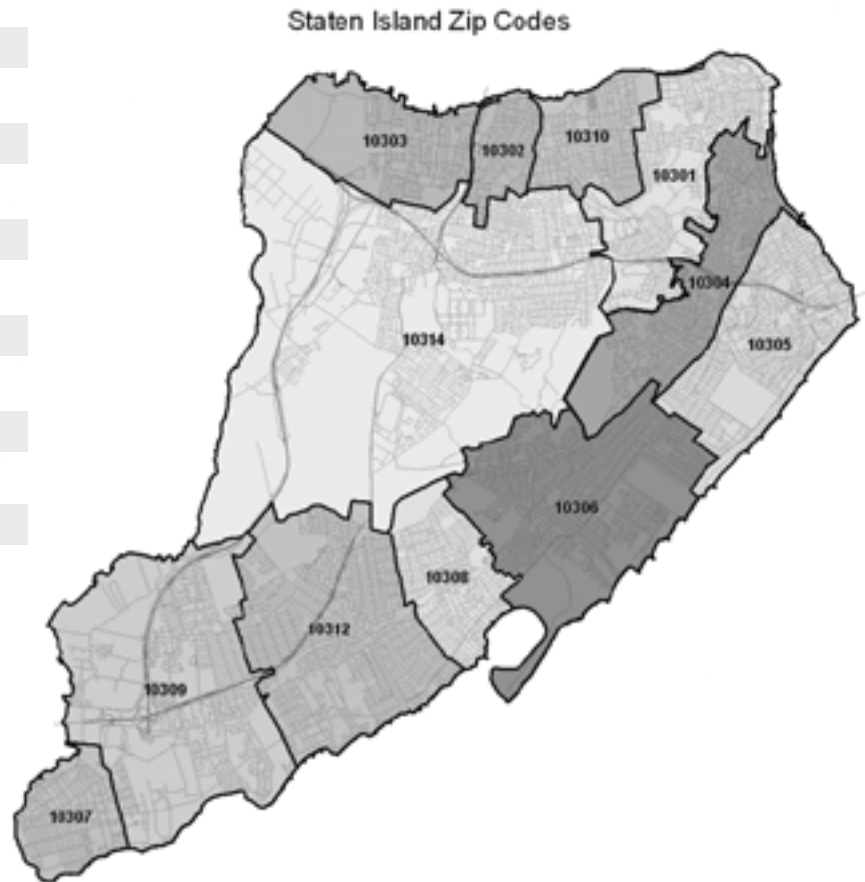
As we prepare for our next accreditation cycle in 2018, I would like to remind everyone of the importance of our work. We come together to not only meet the standards of the Commission on Cancer (CoC), but to truly make an impact on the care of our cancer patients. The CoC standards are in place to guide us, however they should never limit our creativity for what we can do for our patients and community. We must always strive to exceed and optimize our endeavors in order to truly be successful.

A handwritten signature in black ink that reads "Nisha A. Lakhi". The signature is stylized with a large, prominent letter 'A'.

Nisha A. Lakhi MD, FACOG
Cancer Liaison Physician

CURRENT ZIP CODE 2016 ANALYTIC CASES

Current Zip Code	Number of Cases	Percent
10314	116	20.17%
10301	82	14.26%
10304	53	9.21%
10310	50	8.7%
10312	44	7.65%
10306	44	7.65%
10303	40	6.95%
10302	32	5.57%
10305	31	5.39%
10308	23	4.00%
10309	16	2.78%
10307	9	1.57%
11214, 11209, 07083, 11235,	40	6.87%
11228, 11229, 11233, 11236,		
11435, 16335, 29575, 07208,		
07306, 07701, 07748,		
07960, 08809, 08820,		
08873, 07036, 11215, 11216,		
11223, 11226, 11201, 11204		



RICHMOND UNIVERSITY MEDICAL CENTER CANCER CASES DIAGNOSED 2016

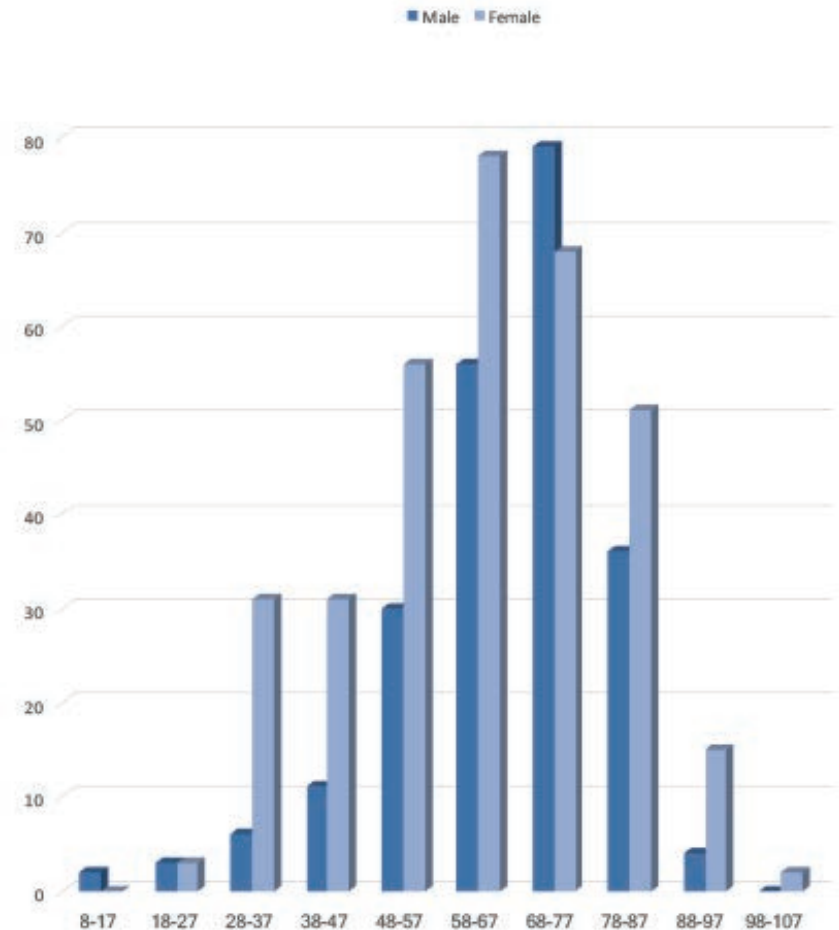
*NATIONAL COMPARISON OF SELECTED CANCER SITES

*Estimated Numbers of New Cases from: The American Cancer Society Cancer Facts & Figures 2016

PRIMARY SITE	RICHMOND UNIVERSITY		NEW YORK		NATIONAL	
	CASES	PERCENT	CASES	PERCENT	CASES	PERCENT
BREAST	87	15.1%	16,360	14.8%	246,660	14.6%
LUNG	53	9.2%	13,200	12.0%	224,390	13.3%
PROSTATE	37	6.4%	12,010	10.9%	180,890	10.7%
COLORECTAL	58	10.6%	8,730	7.9%	134,490	8.0%
BLADDER	24	4.2%	5,220	4.7%	76,960	4.6%
NH LYMPHOMA	20	3.7%	4,860	4.4%	72,580	4.3%
CORPUS UTERI	51	8.4%	4,360	4.0%	60,050	3.6%
MELANOMA	9	1.6%	4,250	3.9%	76,380	4.5%
LEUKEMIA	19	3.5%	4,490	4.1%	60,140	3.6%
CERVIX	13	6.1%	790	0.7%	12,990	0.8%
ALL OTHERS	176	32.2%	36,010	32.7%	539,680	32.0%
TOTAL CASES	547	100.0%	110,280	100.0%	1,685,210	100.0%

AGE BY SEX GRAPH 2016 ANALYTIC CASES

Age Range	Male	Female
8-17	2	0
18-27	3	3
28-37	6	31
38-47	11	31
48-57	30	56
58-67	56	78
68-77	79	68
78-87	36	51
88-97	4	15
98-107	0	2
Total	227	335



THE ONCOLOGY NURSE PLAYS A VITAL ROLE IN COORDINATING THE MULTIPLE AND COMPLEX TECHNOLOGIES NOW COMMONLY EMPLOYED IN CANCER DIAGNOSIS AND TREATMENT.

The oncology nurses at Richmond University Medical Center, in caring for their patients and helping their patients' families, are appreciated by all.



PROGRAM AGENDA

ONCOLOGY MEDICAL CONFERENCE – SEPTEMBER 12, 2017

To ensure that our staff is abreast in the latest strategies and continuing education in oncology care.

8:00-8:20am Registration & Breakfast

8:25-8:30am Welcome

Rosa Driscoll, RN, BSN, MA, NE-BC

8:30-9:30am Diane Hopkins, RN, MA

Counselor, Consultant — Mind Body Medicine

Empathy Skills For The
Professional Caregiver

9:30-10:30am Dr. Thomas Forlenza

Multiple Myeloma — Signs &
Symptoms, Staging and
Treatment Modalities

10:30-11:30 Dr. Helen Kay, DO

Colon Cancer — Signs & Symptoms,
Staging and Treatment Modalities

11:30-12:30pm Diane Yagerman, RN

Oncology Nurse Educator

CTCAE — Understanding The
Common Terminology Criteria
for Adverse Events

12:30-1:15pm Lunch Break

1:30-2:30pm Sue Martin, RN

Oncology Nurse Educator

HER2 Testing

2:30-3:00pm Zarina Parnas, PharmD, Kesley Dunn, PharmD

Chemotherapy Drug Updates



PREVENTION 2017 COLON CANCER COMMUNITY OUTREACH COORDINATOR REPORT

To determine the needs of the Staten Island (Richmond County) community for our cancer services in 2017, Richmond University Medical Center has consulted the American Cancer Society. Excluding skin cancers, colorectal cancer is the third most common cancer diagnosed in both men and women in the United States. The American Cancer Society's estimates for the number of colorectal cancer cases in the United States for 2017 are 95,520 new cases of colon cancer and 39,910 new cases of rectal cancer. Additionally, the Journal of the National Cancer Institute recently

set out to explore a trend in colorectal cancer among younger Americans. While overall rates of colorectal cancer have been falling dramatically since the mid-1980s, there's been a steady uptick of this disease among people younger than 50.

On March 24, 2017, to coincide with "National Colorectal Cancer Awareness Month," Richmond University Medical Center hosted a handful of events that were promoted via flyers and social media. All of these events were well attended and received by the general public.

The month was kicked off when hospital employees participated in the "Dress in Blue Day" followed by a special morning edition of our "Meet the Nurses" program at the West Brighton Senior Center, featuring Dr. Loren Harris. Our evening "Meet the Nurses" program featured Dr. Manuel Gonzalez, who spoke to the community and nursing students about spreading awareness of colon health and screenings among our younger population. Our GI Nurses hosted a free, four-hour, open to the public, prevention awareness event in our lobby. Represented at this event were the American Cancer Society; local food markets which distributed "colon-friendly foods"; Endo nurses, and an Endo doctor. There were giveaways, including "Colon

Cancer Awareness” lapel pins, donated by NY State Senator Andrew Lanza. Approximately 200 members of the public attended the event. Our Community Outreach Team also participated in Congressman Dan Donovan’s Monday, April 24th Health and Wellness Fair at the JCC on Manor Road. At this event we reached about 1000 people and distributed information on colon, lung and breast screenings.

At all of these events the mini-inflatable colon that was purchased through the grant money made an appearance. The mini-colon explains the anatomy of colon health and is always a real conversation starter.

Our outreach regarding colon health is still not over. We are also hosting, along with our Dietary Department, a “What You Eat Matters!” event on Wednesday, May 3rd at our 800 Castleton Avenue location. On this date we hope to reach a large audience on the importance of healthy eating and its relationship to colon health.



March 24th Event GI Nurses Day	199 Sign-Ins. 24 answered yes to having info sent to them regarding FIT & colonoscopy. All were sent mailings and will be added to cold calling mailings
March 29th Senior Event	21 Sign-Ins. 6 requested info
March 29th Evening Event	7 College Students given info on colorectal cancer
April 30th Event	30 folders given out. 8 requested screenings





SCREENING STANDARD 2017 MELANOMA COMMUNITY OUTREACH COORDINATOR REPORT

To determine the needs of the Staten Island (Richmond County) community for our cancer services in 2017, Richmond University Medical Center has consulted the American Cancer Society. About 87,110 new melanomas will be diagnosed (about 52,170 in men and 34,940 in women) and about 9,730 people are expected to die of melanoma (about 6,380 men and 3,350 women). The rates of melanoma have been rising for the last 30 years. Melanoma is more than 20 times more common in whites than in African Americans. Overall, the lifetime risk of getting melanoma is

about 2.5% (1 in 40) for whites, 0.1% (1 in 1,000) for blacks, and 0.5% (1 in 200) for Hispanics. The risk of melanoma increases as people age. The average age of people when it is diagnosed is 63. But melanoma is not uncommon even among those younger than 30. In fact, it's one of the most common cancers in young adults (especially young women).

On September 2nd, 3rd, and 4th 2017, Richmond University Medical Center participated in the Richmond County Fair, which is held each year on the grounds

of Historic Richmond Town. As one of the main sponsors of this event we staffed a table at which we distributed literature to attendees about services the hospital offers, including, but not limited to, Lung Screenings, Colon Screenings, and Tobacco Cessation Classes. We took this opportunity as a screening event, specifically skin cancer screenings.

Over the course of the weekend, and with the help of four residents, we were able to screen twenty-eight people. The doctors looked over individuals who asked to have their skin checked for possible skin cancer. After the evaluations each individual was given literature that explains the stages of melanoma and complimentary sunscreen.

Of the twenty-eight people screened four people were advised to have a follow-up biopsy. Cancer Navigator Joseph Ferrara, RN, followed up with these individuals to ensure that they received the services they need. Two individuals followed up with their dermatologists and had a biopsy performed; the other two individuals indicated that they were in communication with their dermatologists and had every intention of following up for a biopsy with their doctors.



SPECIAL EVENTS

FALL AND SPRING SMOKING CESSATION SESSIONS

- Three smoking cessation sessions
- Two six-week, one-hour sessions conducted
- One three-week 1.5-hour session to assist with New Year's Resolutions
- Created a continuing support group, "Conquerors," for recently quit clients. The group ran for six weeks through the summer.

LUNG CANCER SCREENING PROGRAM

COMMUNITY OUTREACH COORDINATOR REPORT

We continue to attribute increased patient volume to our aggressive marketing and outreach efforts, and we've improved quality of care with continuing education.

PATIENT VOLUME (FROM NOVEMBER 2016 TO NOVEMBER 2017)

- 150 new patients.
- Three month and six month follow ups done throughout the year
- Consistent monitoring of third-year appointments and securing fourth-year appointments.
- Detected eight (8) new early stage lung cancers via our screening program (Jan. 1 - Oct. 11).
- Five surgical cases were done at RUMC
- Detected one early stage lung cancer during a third-year follow-up screening.



2017 EVENT CALENDAR

COMMUNITY OUTREACH COORDINATOR PARTICIPATION

DATE	EVENT	# OF PEOPLE REACHED
January 29, 2017	Boro President Open House	1500
March 16, 2017	Salute to FDNY/EMT	1000
March 24, 2017	GI Nurses Day	200
March 29, 2017	West Brighton Senior Center	50
March 29, 2017	Meet the Nurses	50

DATE	EVENT	# OF PEOPLE REACHED
April 8, 2017	BBQ Cook Off	2000
April 22, 2017	Chili Cook Off	2000
April 24, 2017	Congressman Dan Donovan Senior Health Fair	500
April 27, 2017	SIEDC Business Conference	2000
April 30, 2017	March of Dimes	2000
May 3, 2017	800 Castleton Colon Event	100
May 7, 2017	MS Walk	1500
June 4, 2017	Sunrise Walk	2000
July 1, 2017	Look Good Feel Better	50
August 1, 2017	Night Out Against Crime	2000
September 4, 2017	Richmond County Fair	5000
October 17, 2017	SIEDC Health & Wellness Expo	500
October 14, 2017	CM Debi Rose Community Fair	300
October 15, 2017	Making Strides Against Breast Cancer Walk	4000
October 20, 2017	Bea Victor Closing Ceremony	1000
November 1, 2017	Lung Symposium	50
November 7, 2017	Turquoise Takeover	100

PHOTO GALLERY COMMUNITY OUTREACH

Whether it's attending community events, bringing experts in to educate about the latest in cancer treatments, or hosting awareness campaigns, Richmond University Medical Center is at the forefront of community engagement.



Colon Cancer Awareness "Meet the Nurses"

Lung Cancer Symposium



Colon Cancer



Richmond University
Medical Center

Shining a Light on Lung Cancer



Look Good Feel Better

TOBACCO
CESSATION
CLASS
IN PROGRESS

FOR MORE INFORMATION
PLEASE CALL
718-R18-2391

Tobacco



County Fair



County Fair



Borough President Breast Health Round Table



800 Castleton Avenue Colon Health Awareness





West Brighton Senior Center Health Fair



SIEDC Health & Wellness Expo



NOREEN'S STORY

I'll never forget it — a simple question that I asked my doctor, and a simple response that saved my life. I was smoke-free for a little over a year after being a pack a day smoker for 30+ years. As I was leaving my doctor's office after a routine checkup I knew I was due for a chest x-ray, so I asked, "Hey do I need to go for a chest x-ray?"

When I was smoking I never would have asked for a chest x-ray, much less make regular doctor visits. Dr. Bachi responded

"Actually, the hospital is conducting a program that you qualify for where they do free cancer screenings that are more thorough than x-rays". The doctor's office made the appointment for me and off I went.

Because of my smoking history I was anxious to say the least. Nurse Nancy put me at ease and told me it was just a quick CT scan. She escorted me upstairs and it was as described, a quick CT scan. Nancy could read the concern on my face and in my voice and told me they would get back to me as soon as they had the results. The next day I received a call from the doctor. He told me the CT scan showed something that will require more testing. I just knew that meant I had cancer, I accepted my fate hoping for the best. I couldn't help but think, "I did this to myself."

Long story short I did have Stage 1 lung cancer and six weeks later I was on an operating table having a piece of my lung removed. Three days later I was on my way home cancer free, no chemo or radiation required.

When I got home there was an oxygen concentrator and a couple of oxygen canisters waiting for me. That concerned me. I was worried that I damaged my lungs so bad that an oxygen tank would be part

As I was leaving my doctor's office after a routine checkup I knew I was due for a chest x-ray, so I asked, "Hey do I need to go for a chest x-ray?"

of my daily routine. I was determined to do everything in my power to make that not a reality.

I clearly remember looking at the 13 steps to my bedroom upstairs and thinking what Edmund Hillary must have thought when he looked at Mount Everest, "This is gonna be tough, but I can do it." I began my ascent. I was right, it was tough, and I did do it. As I sat at the top step looking down I knew, I knew I could make the steps, I knew I had to build my strength back up, and most importantly I knew I was not going to need an oxygen tank. Since I've walked those steps I've ridden the attractions at Universal Studios, sung in the bars of Nashville, traversed the mountains at Mount Rushmore, and danced on the beach in Jamaica. Thanks to the lung cancer screening I received at Richmond University Medical Center I am cancer free and not just surviving, but thriving.

RICHMOND UNIVERSITY MEDICAL CENTER CANCER SERVICES CONTACT PHONE NUMBERS

SERVICES	PHONE NUMBER
Smoking Cessation	718-818-2391
Breast Nurse Navigator	718-818-2030
Cancer Service Navigator	718-818-1485
Lung Nurse Navigator	718-818-2391
Mammography Appointments	718-818-1490
Behavioral Health	718-818-5302
Cancer Services Program (NYSDOH Screening)	718-818-1685
Gynecological Oncology	718-818-2109
Pediatric Oncology	718-818-4399
Radiation Therapy	718-876-2023
Rehabilitation Services	718-818-2107
Inpatient Oncology	718-818-4690
Outpatient Clinics	718-818-4570
General Cancer Inquiries	718-818-1084

CANCER COMMITTEE MEMBERS 2017

Required Physician and Non-Physician Members	Designated Member Name	Designated Alternate Name
Cancer Liaison Physician	Nisha Lakhi, MD	
Cancer Committee Chair	Thomas Forlenza, MD	
Cancer Conference Coordinator	Mahmoud Aly, MD	Marc Adams, MD
Cancer Program Administrator	Kathryn Giovanazzo, MBRT	
Cancer Registry Quality Coordinator	Richard Steinbruck, MD	Deborah Rodriguez, CTR
Clinical Research Representative or Coordinator	Adnan Nassir, MD	Dennis Bloomfield, MD
Community Outreach Coordinator	William Smith	Lorraine Scanni
Psychosocial Services Coordinator	Martin Phillips, AAMFT, LMFT	
Quality Improvement Coordinator	Patricia Abbruzzese, RN	Nancy Taranto, VP
Diagnostic Radiologist	Michael Mantello, MD	George Viscikis, MD
Medical Oncologist	Thomas Forlenza, MD	Shamin Salman, MD
Pathologist	Walter Walek, MD	Thomas Hansen, MD
Radiation Oncologist	Marc Adams, MD	Hoon Lee, MD
Surgeon, general or specialist in cancer care	Loren Harris, MD	Richard Steinbruck, MD
Certified Tumor Registrar (CTR)	Deborah Rodriguez, CTR	

Required Physician and Non-Physician Members	Designated Member Name	Designated Alternate Name
Oncology Nurse	Rosa Driscoll, RN	Lauren Stazzone-Marrone, RN
Palliative Care team member, when these services are provided on-site	Tania Hardiman, RN, AVP	Martin Phillips, AAMFT, LMFT
Performance Improvement or Quality Management representative	Nancy Taranto, VP	Kim Wagner, RN
Social Worker or Case Manager	Tania Hardiman, RN, AVP	
American Cancer Society staff representative	Lauren Moore, MS	
Psychiatric or mental health professional trained in the psychosocial aspects of cancer care	Martin Phillips, AAMFT, LMFT	
Pharmacist	Angela Gilbride, RPh	Lenny Shats, RPh
Registered Dietician	Marie Falzone, RD	Gerri Wasser, RD
Rehabilitation representative	Patricia Hoo, RRT-NPS	
Breast Navigator	Marie Kimball, RN	
Gynecology Oncology	Eli Serur, MD	Nisha Lakhi, MD
Lung Navigator	Nancy Rooney, RN	
Pediatric Oncology	Joan Graziano, MD	Joann Stewart, RN

Richmond University Medical Center

An Affiliate of the Mount Sinai Health Network



718-818-1234 | 355 Bard Avenue, Staten Island, NY 10310 | www.RUMCSI.org